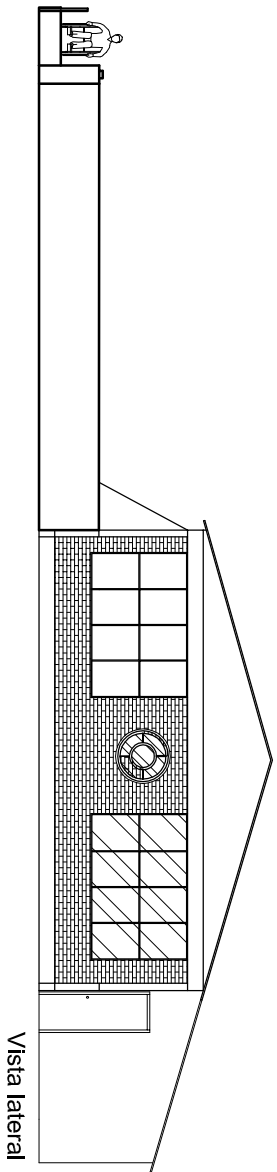
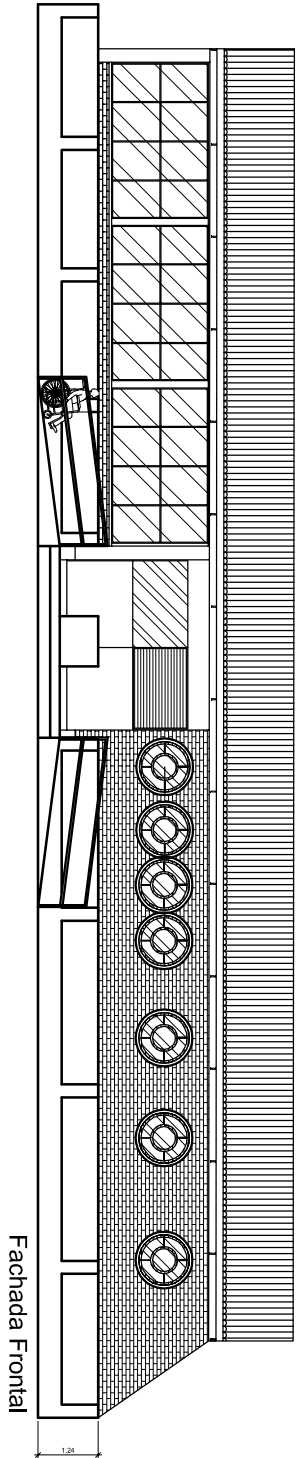
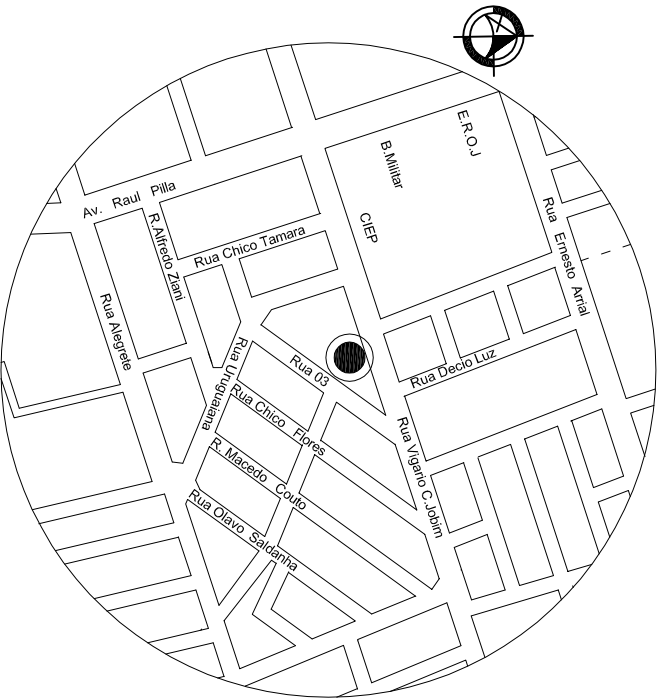
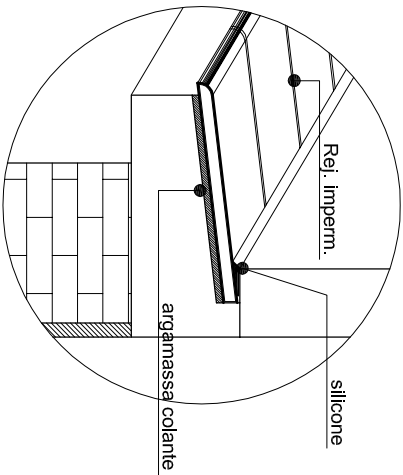
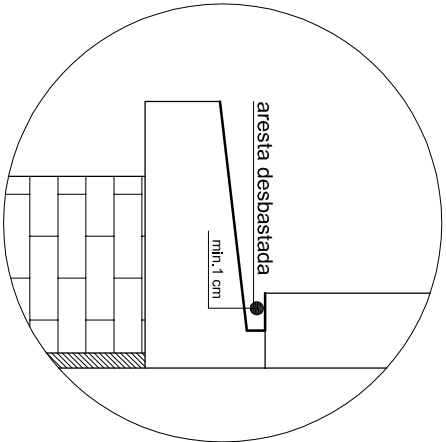
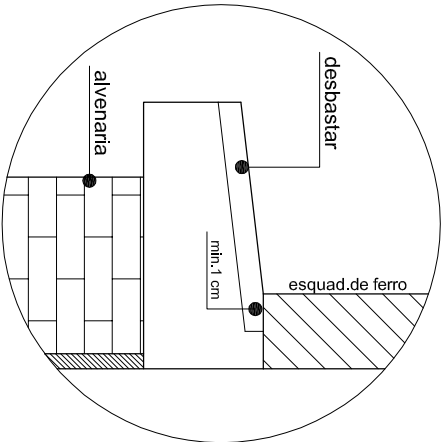
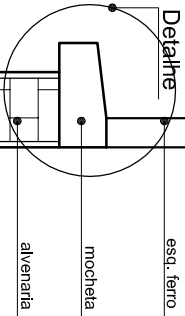
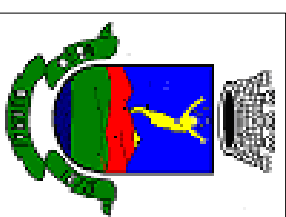


PLANTA BAIXA MOBILIADA
Área construída: 276,84 m²



PREFEITURA MUNICIPAL DE QUARAÍ SEC. DO PLANEJAMENTO SETOR DE PROJETOS

Conteúdo: Planta de Situação - Baixa - Vistas & detalhes



Local: Centro Comunitário da Vila Kennedy

Resp. Técnico: Arq. Urb. Adriano Rodrigues
CREA-RS 128.403 D

PrefeitoMunicipal:

Projeto: Reforma - Serv. Gerais & Pintura

João Carlos Vieira Gediel

Área: 276,84 m²

Escala: Sem escala

Data: Maio 2010

Prancha: 01/01

Colaboradores: